

OFFSHORE



Think Fastnet, Sydney-Hobart, or the Newport-Bermuda – the classic medium-distance offshore races. Or perhaps cruising in the Western Approaches in the autumn. These are the natural homes for our Offshore range. It's not trans-oceanic gear that will take you through one Southern Ocean storm after another for weeks on end... but it is not far off. Offshore is only dialling it down a notch.

The Offshore range retains the waterproofing and breathability of the Ocean range, but it gives up a little durability in exchange for gains in comfort and a weight saving. This is particularly useful on those offshore races where there isn't time for a full-watch system to kick in. The ones where you live in your foulies for a couple of days; that's when the breathability, waterproofness and extra comfort and lightness of the Offshore range come into their own.



www.northsails.com



OFFSHORE JACKET

27M045 **NEW**

SIZE: S | M | L | XL | XXL



RED



SULPHUR

GORE-TEX®
PRO

TW160

4DL

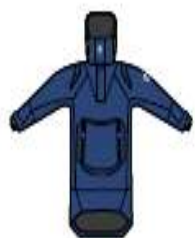
- DURABILITY ★★★★★☆
- WATERPROOFING ★★★★★★
- BREATHABILITY ★★★★★★
- WEIGHT (Large) 830g

More details on fabric technology on page 14

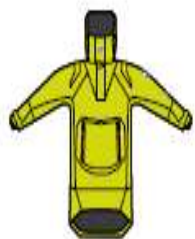


NEW OFFSHORE SMOCK
27M040

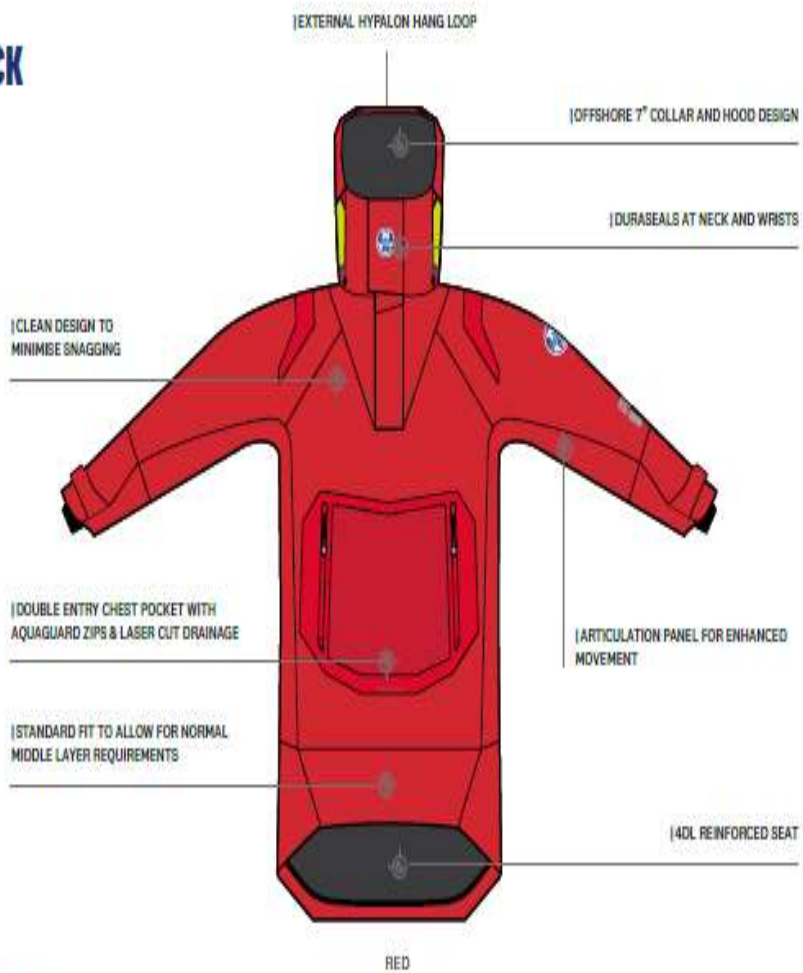
SIZE: S | M | L | XL | XXL



OCEAN BLUE



SULPHUR



- DURABILITY ★★★★★☆
- WATERPROOFING ★★★★★★
- BREATHABILITY ★★★★★★
- WEIGHT (Large) 800g

GORE-TEX[®] PRO | TW160 | 4DL

NEW OFFSHORE TROUSERS
27M440

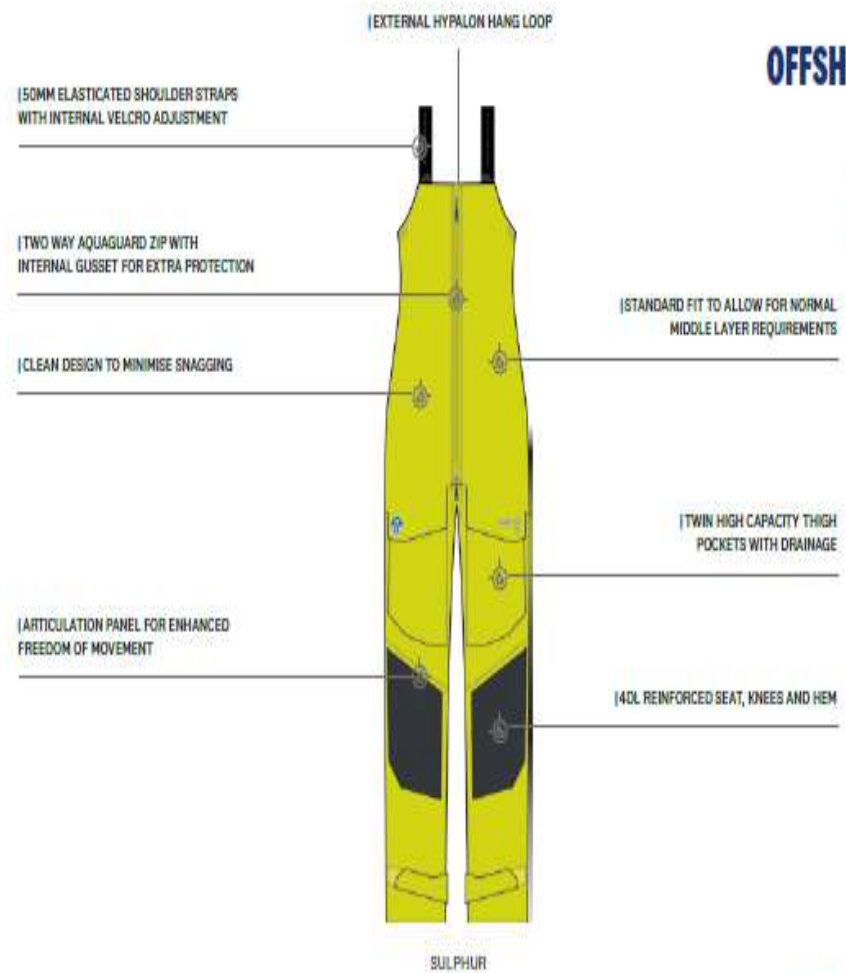
SIZE: S | M | L | XL | XXL



RED



OCEAN BLUE



- DURABILITY ★★★★★☆
- WATERPROOFING ★★★★★★
- BREATHABILITY ★★★★★★
- WEIGHT (Large) 790g

GORE-TEX[®] PRO | TW160 | 4DL

INSHORE



Inshore racing and coastal cruising have a different tempo to their offshore siblings. The proximity of land or the next mark means that things need to happen more quickly; circumstances - and the weather - can change fast.

The Inshore range offers greater flexibility in the design, emphasising movement and lightness over durability and waterproofness. It also offers greater flexibility in the range of garments with a choice of race hybrid, race smock and race jackets to pair with the trousers. So whether it's the bow or the navigatorium, Cowes Week or round the cans in Chesapeake Bay or Auckland Harbour, our Inshore gear will keep you warm, dry and comfortable.



www.northsails.com



INSHORE RACE HYBRID

27M055

NEW

SIZE: S | M | L | XL | XXL

| ADJUSTABLE NECK SEAL DESIGN

| EXTERNAL HYALON HANG LOOP

| ASYMMETRIC AQUAGUARD FRONT ZIP WITH STORM GUARD SYSTEM

| CLEAN DESIGN TO MINIMISE SNAGGING

| SLIM FIT ALLOWING FOR LIGHT MIDDLE LAYER REQUIREMENTS

| TWIN POCKETS WITH AQUAGUARD ZIPS ARTICULATION PANEL FOR ENHANCED FREEDOM OF MOVEMENT

| ADJUSTABLE WAIST SEAL

| ADJUSTABLE WRIST SEALS



OCEAN BLUE



PHANTOM

GORE-TEX®
PRO

TW160

DURABILITY ★★★★★
WATERPROOFING ★★★★★
BREATHABILITY ★★★★★
WEIGHT (Large) 480g

More details on fabric technology on page 14

INSHORE - PERFORMANCE

NEW INSHORE RACE SMOCK

27M050

SIZE: S | M | L | XL | XXL



OCEAN BLUE

[CLEAN DESIGN TO MINIMISE SNAGGING

[ARTICULATION PANEL FOR ENHANCED FREEDOM OF MOVEMENT

[DURASEALS AT NECK AND WRISTS



PHANTOM

[DURASEALS AT NECK AND WRISTS

[EXTERNAL HYPALON HANG LOOP

[SLIM FIT ALLOWING FOR LIGHT MIDDLE LAYER REQUIREMENTS

[DOUBLE ENTRY CHEST POCKET WITH AQUAGUARD ZIPS & LASER CUT DRAINAGE

[ADJUSTABLE WAIST SEAL

- DURABILITY ★★★★★☆
- WATERPROOFING ★★★★★★
- BREATHABILITY ★★★★★★
- WEIGHT (Large) 540g

GORE-TEX® PRO | TW160 | DuraSeal



OCEAN BLUE

PHANTOM

INSHORE RACE JACKET

27M075

SIZE: S | M | L | XL | XXL

- + Clean design to minimise snagging
- + Slim fit allowing for light middle layer requirements
- + Inshore 5" collar design with removable hood
- + Aquaguard front zip with Storm Guard system
- + Adjustable outer cuff
- + Chest pocket with Aquaguard zip & laser cut drainage
- + Twin side pockets with Aquaguard zips
- + Articulation panel for enhanced movement
- + External Hypalon hang loop

- DURABILITY ★★★★★☆
- WATERPROOFING ★★★★★★
- BREATHABILITY ★★★★★★
- WEIGHT (Large) 570g

TW160
GORE-TEX® PRO

TW160
GORE-TEX® PRO

4DL



PHANTOM

OCEAN BLUE

NEW INSHORE RACE TROUSERS

27M450

SIZE: S | M | L | XL | XXL

- + Clean design to minimise snagging
- + Slim fit allowing for light middle layer requirements
- + 50mm elasticated shoulder straps with internal velcro adjustment
- + Two way Aquaguard zip with internal gusset for extra protection
- + 4DL reinforced seat, knees and back hem
- + Thigh pocket with laser cut drainage
- + Articulation panel for enhanced freedom of movement
- + External Hypalon hang loop

- DURABILITY ★★★★★☆
- WATERPROOFING ★★★★★★
- BREATHABILITY ★★★★★★
- WEIGHT (Large) 700g

GP AERO



The GP Aero range epitomises the innovation that you have come to expect from North Sails. This is high-performance race gear. It is for yacht racing as a truly athletic sport, with design inspiration from cycling jackets rather than traditional foulies.

The GP Aero is lighter, more aerodynamic, and more flexible and comfortable than anything else out there. The jacket weighs just 300gms. It pairs with shorts or fast dry trousers and it is not intended to keep you completely dry. Its home is the high-performance race circuits of the Mediterranean, the Caribbean or (sometimes) the Solent (in summer anyway). It will provide the extra protection that you need to stay comfortable and keep your focus when the speed rises, and the spray starts flying.

"I FELL IN LOVE WITH THE GP AERO JACKET AND SHORTS. GREAT TO MOVE ABOUT IN, SUPER BREATHABLE, PERFECT WEIGHT FOR INSHORE RACING. IT'S GOING TO BE REALLY TOUGH TO HAND THEM BACK AFTER TESTING."

Dave Lenz - North Sails Expert, Gosport, UK

GP AERO WATERPROOF JACKET

27M065

NEW

SIZE: S | M | L | XL | XXL

| STRETCH BINDING AT NECK

| ASYMMETRIC AQUAGUARD FRONT ZIP WITH STORM GUARD SYSTEM

| CHEST POCKET WITH AQUAGUARD ZIP

| SUPER CLEAN STRETCH AERO FIT TO MINIMISE DRAG AND SNAGGING

| ALLOWS FOR MINIMAL MIDDLE LAYER GARMENTS

| EXTERNAL HYPALON HANG LOOP

| ARTICULATION PANELS AID STRETCH FABRIC TO GIVE EXCEPTIONAL FREEDOM OF MOVEMENT

| STRETCH BINDING WRISTS



PHANTOM



OCEAN BLUE



TW140S
STRETCH

- DURABILITY ★★★★★
- WATERPROOFING ★★★★★
- BREATHABILITY ★★★★★
- WEIGHT (Medium) 290g



NEW GP WATERPROOF SHORTS

27M565

SIZE: 30 | 32 | 34 | 36 | 38 | 40 | 42



PHANTOM

| SUPER CLEAN STRETCH AERO FIT TO MINIMISE DRAG AND SNAGGING

| ALLOWS FOR MINIMAL MIDDLE LAYER GARMENTS

| 11" LEG LENGTH



OCEAN BLUE

| ADDITIONAL BELT LOOPS TO SECURE KNIFE/MULTITOOL

| AQUAGUARD ZIP WITH SECURITY BUTTON

| ARTICULATION GUSSET FOR ENHANCED FREEDOM OF MOVEMENT

| THIGH POCKET

- DURABILITY ★★★★★
- WATERPROOFING ★★★★★
- BREATHABILITY ★★★★★
- WEIGHT (Large) 190g



TW140S
STRETCH

NEW GP FAST DRY SHORTS

27M505

SIZE: 30 | 32 | 34 | 36 | 38 | 40 | 42

| ADDITIONAL BELT LOOPS TO SECURE KNIFE/MULTITOOL

| ARTICULATION GUSSET FOR ENHANCED FREEDOM OF MOVEMENT

| SIDE OPENING THIGH POCKETS FOR EASY ACCESS WHEN SEATED

| 11" LEG LENGTH



PHANTOM

| HIGH STRETCH, FAST DRY, LIGHT WEIGHT FABRIC



4DL

NEW GP FAST DRY TROUSERS

27M405

SIZE: 30 | 32 | 34 | 36 | 38 | 40 | 42

| BREATHABLE 4DL REINFORCED SEAT

| ADDITIONAL BELT LOOPS TO SECURE KNIFE/MULTITOOL

| ARTICULATION GUSSET FOR ENHANCED FREEDOM OF MOVEMENT

| SIDE OPENING THIGH POCKETS FOR EASY ACCESS WHEN SEATED

| BREATHABLE 4DL REINFORCED KNEES



PHANTOM



WHITE OCEAN BLUE PHANTOM

NEW GP SS SHIRT
27M290

SIZE: S | M | L | XL | XXL

- † High stretch, fast dry, silk weight fabric
- † 92% Recycled Polyester, 8% Elastane
- † Long lasting Polygiene anti bacterial treatment
- † Flat seams for enhanced comfort
- † Laser cut perforations for enhanced ventilation
- † UV 30+ protection



OCEAN BLUE PHANTOM WHITE

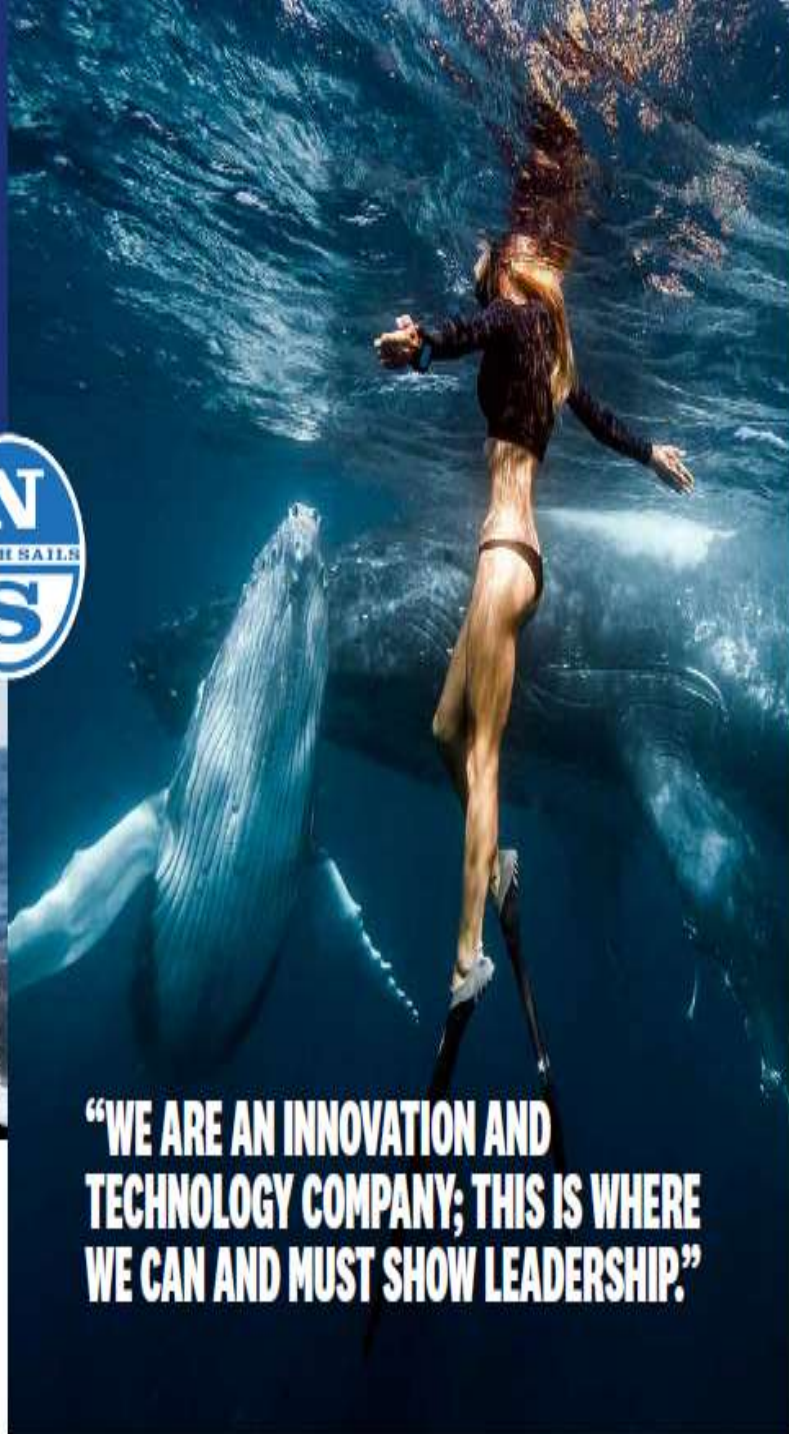
NEW GP LS SHIRT
27M295

SIZE: S | M | L | XL | XXL

- † High stretch, fast dry, silk weight fabric
- † 92% Recycled Polyester, 8% Elastane
- † Long lasting Polygiene anti bacterial treatment
- † Flat seams for enhanced comfort
- † Laser cut perforations for enhanced ventilation
- † UV 30+ protection
- † Thumb loops to prevent ride up when layering



CLOSING THE LOOP



“WE ARE AN INNOVATION AND TECHNOLOGY COMPANY; THIS IS WHERE WE CAN AND MUST SHOW LEADERSHIP.”

Planet Ocean is under threat. Runway global warming. Acidification. Coral bleaching. Unstoppable tides of plastic washing onto beaches, swirling in gyres and growing by eight million tonnes a year. The numbers are terrifying and intimidating. It seems hopeless, but change will only come one small step at a time. Alone we can do nothing. Together we have a chance.

We have supported the Ocean Family Foundation for many years now, with up to one percent of our turnover going to fund programmes that will support marine life and ocean health, to assist with research, education and plastic reduction. We are an innovation and technology company; this is where we can and must show leadership.

In a first for sailing, we have specifically designed products to be recycled at the end of their life. It's the first time that closed loop design has been achieved in our sport. All our polyester clothing can now be returned at the end of life and will be recycled into yarn for the manufacture of new fabrics.

It's just one of many Initiatives from North Sails Apparel. In 2021, our packaging will only use recycled plastic, while we continue to work on completely plastic-free solutions for 2022. Our "Free the Sea" T-shirt collection is created from upcycled

yarns, 100% recycled cotton and PET bottles. While the spring 2020 collection introduced more recycled materials, organic fibres and low-impact manufacturing processes throughout. The GORE-TEX fabrics we use are bluesign® approved, and OEKO-TEX Standard 100 Class II certified.

Unfortunately, even with all this good work and good news, we have to be honest about some aspects of our clothing. The PTFE from which GORE-TEX is made is not recyclable, in fact it's one of the most stable products known to science. This is also one of the key reasons it's so good as foul weather gear and why it performs better than anything else out there! However, there are also some elements of its manufacture that are unfriendly to the environment. We are addressing some of these issues with new Durable Water Repellent (DWR) solutions (Pages 10-11).

We also strive to make the very best quality garments that we can. This is not single-use or fast fashion; these are clothes that will last. Our hope is that every set of North Sails Apparel foul weather gear will give great service for a decade or more. We know you'll love your North foudles and separation will be heart breaking. When you finally have to say goodbye, it'll only be because you have to...

 **OFF**
TO CLEAN THE OCEAN

“OUR POLYESTER CLOTHING CAN NOW BE RETURNED AT THE END OF LIFE AND WILL BE RECYCLED INTO YARN FOR THE MANUFACTURE OF NEW FABRICS.”

MID LAYER



The mid layer has an important but largely unglamorous job; to provide insulation. It is there to trap air that can be warmed to body temperature, reducing the chilling effect of the cold air swirling around the outer layer. We have two different weights; high loft and micro fleece to match the conditions.

There is no shell, or outer fabric on our mid layers. They are not designed as a dual purpose, windproof jacket for the moment when you peel off an outer layer jacket or smock. This is because a shell material on a mid layer significantly restricts breathability and creates a condensation surface next to the outer layer. It will get wet. In fact, it will get so wet that in some conditions it will look like the outer layer is leaking. And we really don't want that, so no shells on the mid layers.



www.northsails.com



PHANTOM

NEW HIGH LOFT SMOCK 27M310

SIZE: S | M | L | XL | XXL

- + 280 gram/m² High Loft Fleece for maximum heat retention
- + 100% Polyester for fast drying and minimal absorption
- + Designed with no shell to prevent internal condensation build up
- + Offset front zip to reduce bulk around neck
- + Lycra bound hem and cuffs
- + Hypalon hang loop



PHANTOM

NEW MICRO FLEECE SMOCK 27M370

SIZE: S | M | L | XL | XXL

- + 200 gram/m² Micro Fleece
- + 100% Polyester for fast drying and minimal absorption
- + 27% recycled content
- + Designed with no shell to prevent internal condensation build up
- + Offset front zip to reduce bulk around neck
- + Lycra bound hem and cuffs
- + Hypalon hang loop



PHANTOM

NEW MICRO FLEECE TROUSERS 27M470

SIZE: S | M | L | XL | XXL

- + 200 gram/m² Micro Fleece
- + 100% Polyester for fast drying and minimal absorption
- + 27% recycled content
- + Designed with no shell to prevent internal condensation build up
- + Elasticated waist band
- + Lycra bound ankles



More details on fabric technology on page 14

SAILOR JACKET



The Sailor Jacket takes us back to our roots and the greatness of Lowell North in his Olympic heyday. The original - not unlike the one worn by Lowell in the picture - was developed in the 1980s and was North's first-ever clothing. It was designed as a comfortable replacement for the bulky foul weather jackets of that era. It also took inspiration from the aviator jackets of the early twentieth century - cropped in length with snug cuffs and waistband.

The latest Sailor Jacket combines this iconic look with the practicality that modern materials technology can bring; a breathable, splashproof and water repellent shell with a fleece-lined body. If there is one single garment that exemplifies the North Sails journey it is this classic Sailor Jacket.

www.northsails.com

THE SAILOR JACKET FLEECE LINED

27M095

NEW

SIZE: S | M | L | XL | XXL



TITANIUM



PHANTOM



NAVY



OCEAN BLUE



More details on fabric technology on page 14



NEW SAILOR JACKET NET LINED
27M085

SIZE: S | M | L | XL | XXL



PHANTOM



TITANIUM



NAVY



OCEAN BLUE

| WINDPROOF, SHOWERPROOF AND BREATHABLE SHELL FABRIC

| 75% RECYCLED FABRIC CONTENT

| HYPALON ZIP GARAGES

| KNITTED HEM AND CUFFS TO ENSURE A SNUG FIT

| CONTOURED COLLAR

| YKK AQUAGUARD ZIPS

| MESH LINED BODY AND SMOOTH SLEEVE LINING

| SIDE POCKETS AND INTERNAL SECURITY POCKET

| HIDDEN LINING ZIP FOR EASE OF BRANDING



NEW SAILOR JACKET NET LINED FW
27W085

SIZE: XS | S | M | L | XL



PHANTOM



TITANIUM



OCEAN BLUE



NAVY

| CONTOURED COLLAR

| 75% RECYCLED FABRIC CONTENT

| WINDPROOF, SHOWERPROOF AND BREATHABLE SHELL FABRIC

| HYPALON ZIP GARAGES

| KNITTED HEM AND CUFFS TO ENSURE A SNUG FIT

| YKK AQUAGUARD ZIPS

| MESH LINED BODY AND SMOOTH SLEEVE LINING

| SIDE POCKETS AND INTERNAL SECURITY POCKET

| HIDDEN LINING ZIP FOR EASE OF BRANDING



SOFTSHELL+



The soft shell is one of those go-to pieces of clothing that you will live in. Throw it on when you turn upwind for the last time with the sun getting low in the sky and a new chill in the air. Or throw it on when you head out for a meal at the end of a long day on the water. It will always be useful.

SoftShell+ is not a soft shell as many others interpret it though - a fleece with a finished face fabric. The SoftShell+ uses a bespoke, three-layer laminate that starts with a flat, knitted face and a DWR finish.

The next layer is a membrane that makes the fabric breathable and waterproof, while the inner face is a patterned microfleece designed to reduce weight, reduce water absorption, increase loft and air entrapment for extra warmth.

The result is a set of lightweight, showerproof, breathable and very comfortable garments. It's not just a soft shell, it's SoftShell+.



www.northsails.com

SOFTSHELL+ JACKET

NEW

SIZE: S | M | L | XL | XXL

[CONTOURED COLLAR TO MINIMISE HEAT LOSS

[YKK REVERSE COIL AQUAGUARD ZIP

[BOUND CLIFFS TO ENSURE A SNUG FIT



[4 WAY MECHANICAL STRETCH FOR COMFORT AND EASE OF MOVEMENT

[WINDPROOF, SHOWERPROOF AND BREATHABLE LAMINATED SOFTSHELL+ FABRIC

[TWIN SIDE POCKETS

TITANIUM



PHANTOM



OCEAN BLUE



NAVY



SoftShell+

More details on fabric technology on page 14





NEW SOFTSHELL+ JACKET FW

27W035

SIZE: XS | S | M | L | XL

- + Windproof, showerproof and breathable laminated SoftShell+ fabric
- + 4 way mechanical stretch for comfort and ease of movement
- + Cut and sized for the female form - waisted with bust darts
- + Contoured collar to minimise heat loss
- + YKK reverse coil Aquaguard zip
- + Twin Side pockets
- + Bound cuffs to ensure a snug fit

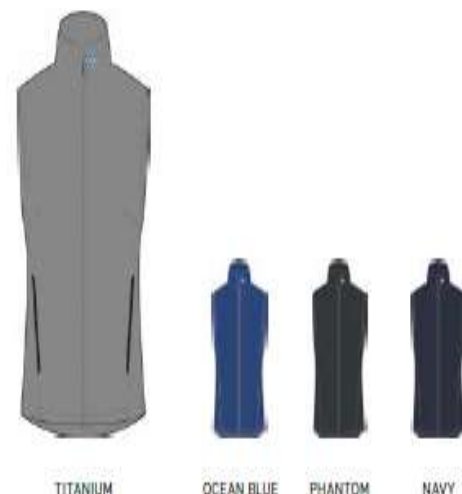


NEW SOFTSHELL+ VEST

27M038

SIZE: S | M | L | XL | XXL

- + Windproof, showerproof and breathable laminated SoftShell+ fabric
- + 4 way mechanical stretch for comfort and ease of movement
- + Contoured collar
- + YKK reverse coil Aquaguard zip
- + Twin Side pockets



NEW SOFTSHELL+ VEST FW

27W038

SIZE: XS | S | M | L | XL

- + Windproof, showerproof and breathable laminated SoftShell+ fabric
- + 4 way mechanical stretch for comfort and ease of movement
- + Cut and sized for the female form - waisted with bust darts
- + Contoured collar
- + YKK reverse coil Aquaguard zip
- + Hypalon zip garages
- + Twin Side pockets



NEW SOFTSHELL+ HOODY

27M300

SIZE: S | M | L | XL | XXL

- + The ultimate hoody
- + Windproof, showerproof and breathable laminated SoftShell+ fabric
- + 4 way mechanical stretch for comfort and ease of movement
- + Cut-away hood sides for peripheral vision
- + Twin entry pouch pocket with phone safe
- + Bound cuffs to ensure a snug fit
- + North Sails chest branding

