

**WOMAN
FW 22-23**

29/08- 2/10

Group 1 NORTH TECH

deep cherry - black - marshmallow



JKT

011537 0999 0244
011539 0244 0999
011548 0999
011549 0999

SWEATSHIRT

093653 0244 0105
093655 0244
093662 0244 0999
093664 0999
093667 0105

POLO

094054 0244

T SHIRT

094150 0105 0244
094154 C3

TROUSER

074724 0999
074731 0999
074734 0999

MARSHMALLOW
0105

BLACK
0999

DEEP
CHERRY
0233

3/10 - 30/10

Group 2 CORE

ivy green - navy - marshmallow



JKT

011537 0436 0802

011539 0436 0802

KNITWEAR

095421 C2

SWEATSHIRT

093653 01015 0802

093654 0105 0802

T SHIRT

094150 0105 0802

094154 C1

TROUSERS

074722 0802 0105

074723 0802

NAVY
0802

MARSHMALLOW
0105

IVY GREEN
0436

31/10- 27/11

Group 3
NORTHTECH
+
EXPLORATION

black - pumicestone - marshmallow



JKT

011547 0999
011549 0999
011551 0999
011848 0999

KNITWEAR

095420 C1
095422 C4
095440 C1
095433 0117

SWEATSHIRT

093662 0999
093664 0117 0999
093667 0105

TROUSER

074724 0117 0999
074731 0999
074723 0117

PUMICE
STONE
0117

MARSHMALLOW
0105

BLACK
0999

28/11 - 11/12

Group 4 EXPLORATION N PIONEER

china blue - black - marshmallow
grey melange



JKT

011544 0999
011545 0999
011537 0999

KNITWEAR

095425 0928 0105
095433 0768
095434 0105 0999

T SHIRT

094153 C3
09 4159 0105 0999

DRESS

094515 C4

TROUSER

074733 0999

CHINA
BLUE
0768

MEDIUM GREY
MELANGE
0928

MARSHMALLOW
0105

BLACK
0999

12/12- X-mas

Group 5
EXPLORATION + CORE

mediterranea - marshmallow - navy



JKT

JKT 011544 0802
011545 0749 0802
011537 0802
011538 0802

KNITWEAR

095432 C1

SWEATSHIRT

093654 0105 0749 0802

T SHIRT

094150 0105 0749 0802

TROUSERS

07 4457 0802
074723 0802

NAVY
0802

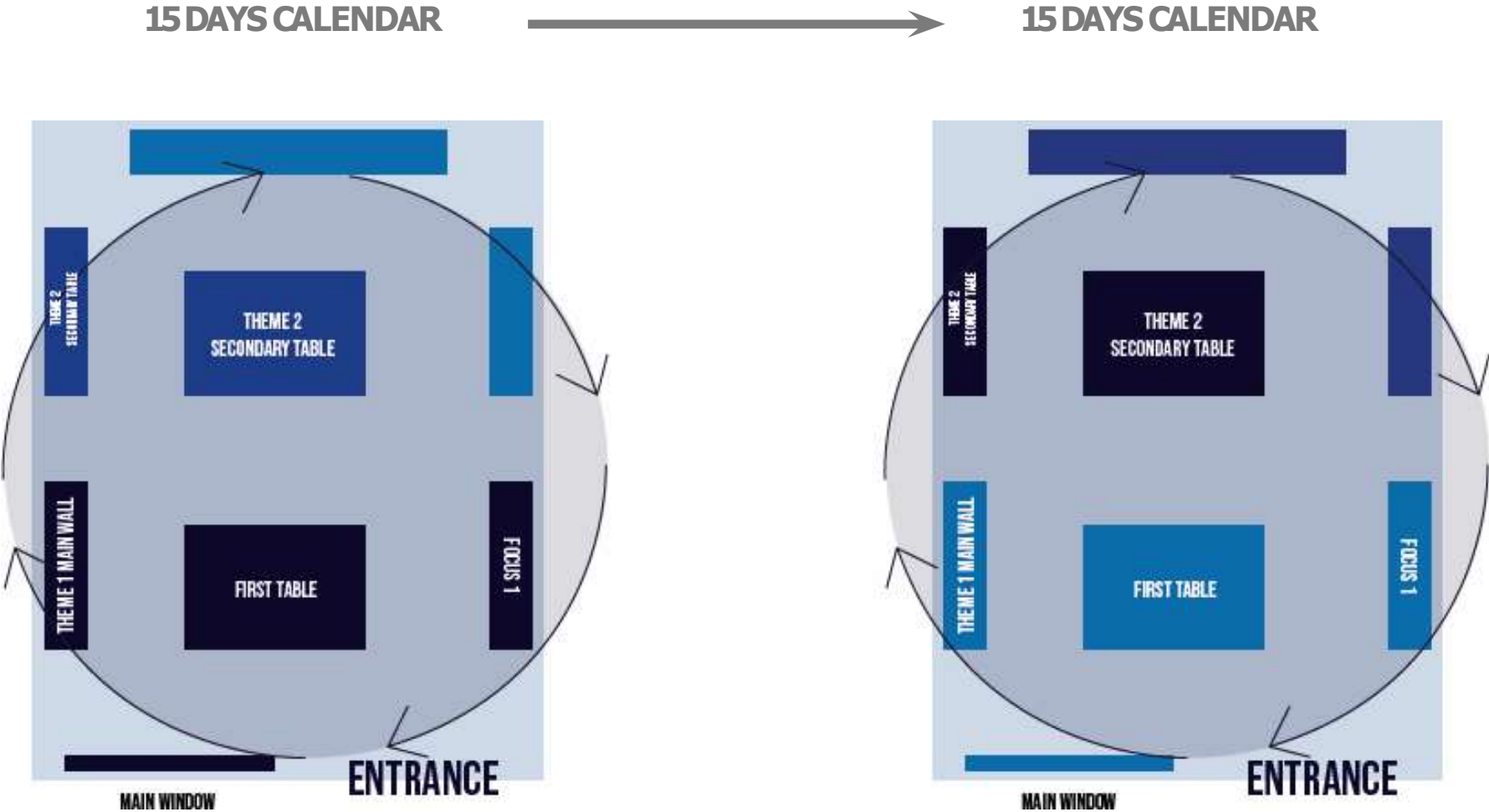
MARSHMALLOW
0105

MEDITERRANEAN
0749

GENERAL RULES

GENERAL RULES

HOW TO DO THE ROTATION OF THE DIFFERENT THEMES.
MAIN WINDOW, MAIN TABLE AND WALL HAVE TO FOLLOW THE SAME COLOUR GROUP .

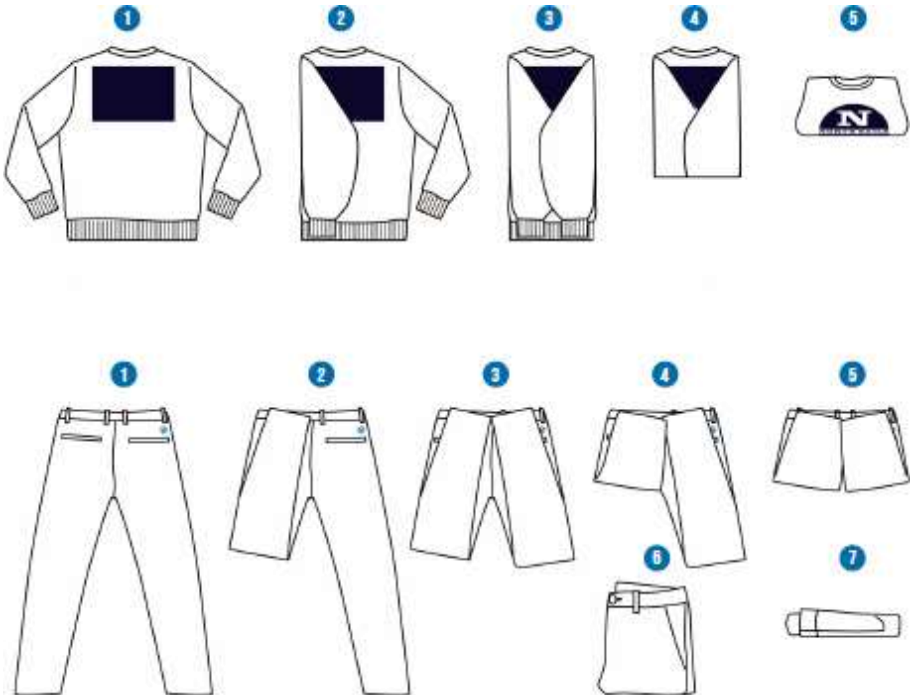


BASIC FOLDING GUIDELINES

VERTICAL SHAPE



HORIZONTAL SHAPE



BASIC FOLDING GUIDELINES

SHIRTS

- ALWAYS FOLD WITH A 4 PAPER IN A VERTICAL V-SHAPE.
- FOLD ON LOGO. MAKE SURE THAT ALL LOGOS ARE ALIGNED.
- FOLD AND ARRANGE ITEMS BY SIZE: SMALLEST SIZE ON TOP.
- OPEN THE FIRST BUTTON OF THE ITEM ON THE TOP.
- THE LABEL ALWAYS INSIDE THE ITEM.



TROUSERS

- TROUSERS ON THE SHELVES FOLDED INTO BUTTERFLY SHAPE OR IN 2 TO SHOW THE LOGO ON THE BACK.
- TROUSERS ON THE TABLES ONLY FOLDED IN 2.



POLOS AND T-SHIRTS

- ALWAYS FOLDED WITH A 4 PAPER IN A VERTICAL V-SHAPE.
- FOLD ON LOGO. MAKE SURE THAT ALL LOGOS ARE ALIGNED.
- FOLD AND ARRANGE ITEMS BY SIZE.
- THE LABEL ALWAYS INSIDE THE ITEM.



JUMPERS AND HOODIES

- ALWAYS FOLDED WITH A 4 PAPER IN A HORIZONTAL.



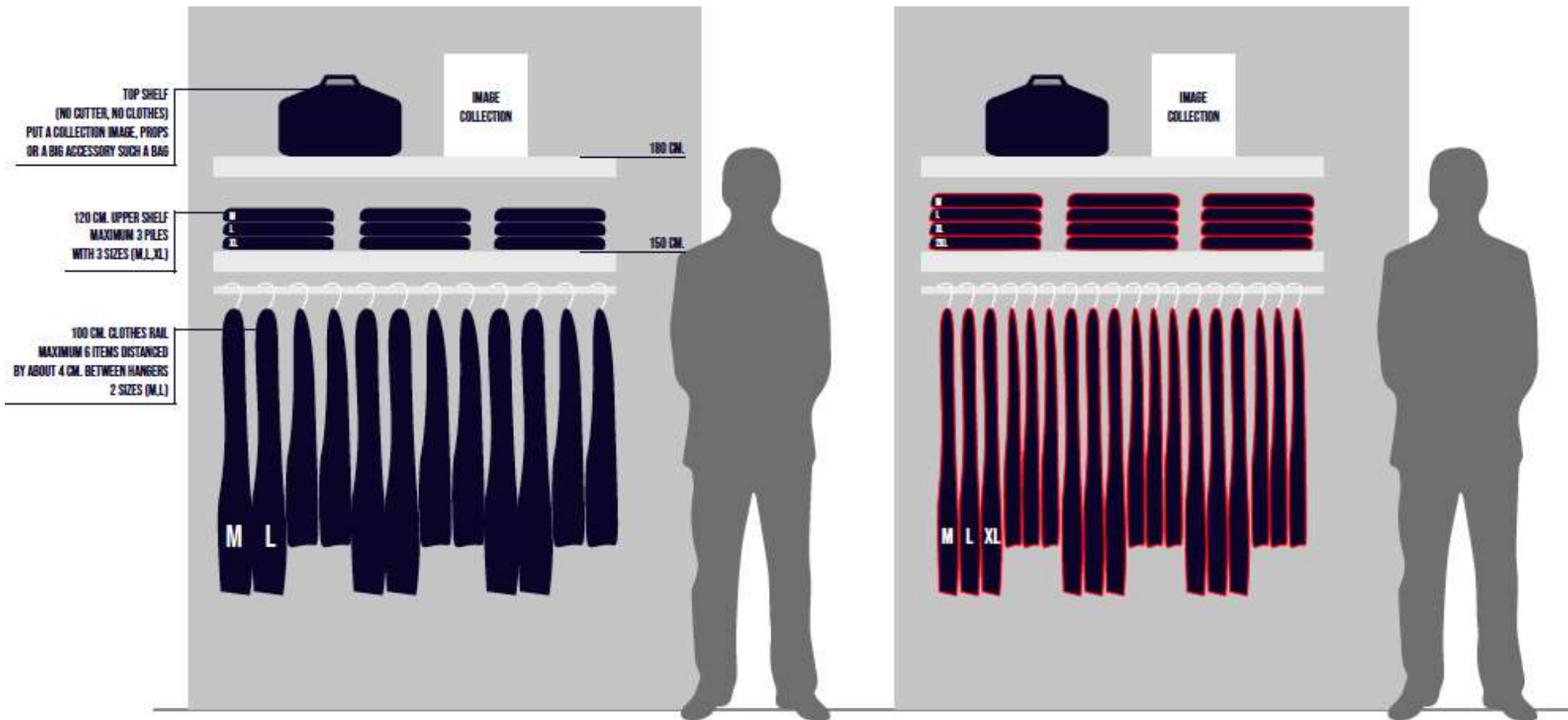
WALLS CAPACITY

SEASON:

- 2 HANGED SIZES (M,L)
- 3 FOLDED SIZES (M,L,XL)

SALES:

- 3 HANGED SIZES (M,L,XL)
- 4 FOLDED SIZES (M,L,XL,2XL)



MANNEQUINS

- 1- USE ALWAYS THE OUTFITS OF THE VISUAL BOOKS.
- 2- DRESS THE MANNEQUINS WITH THE CORRECT SIZE.
- 3- MEN: L / 32 / 43 SHOES
- 4- WOMAN S / 28 / 39 SHOES
- 5- STEAM ALL THE CLOTHES.
- 6- USE PINS IF NECESSARY
- 7- BE SURE THE MANNEQUINS ARE STANDING CORRECT AND STRAIGHT ON THEIR FOOTPLATES.
- 8- MAKE PERFECT WRINKLES IN CORRESPONDENCE OF THE ARTICULATIONS.
- 9- PUT ALWAYS THE SHOES ON THE MANNEQUINS.
- 10- CHECK THE LIGHTS AND THE ILLUMINATION.
- 11- USE ACCESSORIES IF POSSIBLE.
- 12- TAKE CARE OF THE MANNEQUINS.



CORRECT STYLING

- 1** • PLACE THE CLOTHES STRAIGHT
• REMOVE THE LABELS FROM THE ITEMS.
- 2** • REMOVE THE LABEL FROM THE ITEMS.
- 3** • ROLL UP THE TROUSERS.
• PLACE THE CORDS OF THE SHOES PROPERLY
- 4** • PLACE THE SEWINGS STRAIGHT
• MAKE WRINKLES IN CORRESPONDENCE OF THE ARTICULATIONS.
- 5** • PLACE THE COMPONENTS OF THE FIGURE STRAIGHT.
• TAKE CARE OF THE MANNEQUIN.
- 6** • PLACE THE COMPONENTS OF THE FIGURE STRAIGHT.
• KEEP THE BUTTON AND THE BELLY BOTTOM STRAIGHT.

WRONG STYLING

1



2



3



4



5



6



